

Installation of VRP and SQL CE on the Pocket PC

Before beginning the installation, you will need 3 files.

- 1.) sqlce.wce4.armv4.CAB
- 2.) VRPInst.CAB
- 3.) ScanWedge.exe

These files can be obtained from the Visual Retail Plus website at

www.posplus.com/downloads/pocketPC

Download these files to your local computer. When the pocket PC loses power, you will need to replace these files. They should be kept on hand for reinstalling when necessary.

Turn on your Pocket PC and follow the onscreen prompts to calibrate your touchscreen,

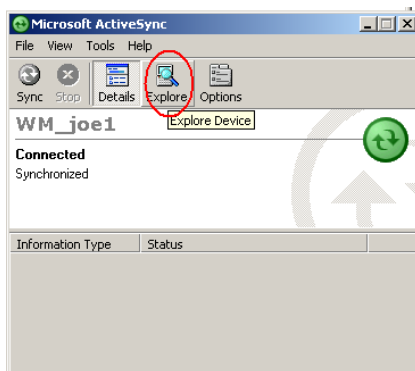
Once setup is complete we will prepare the unit for installation.

Click on "Start", then "Settings" then "Menus"

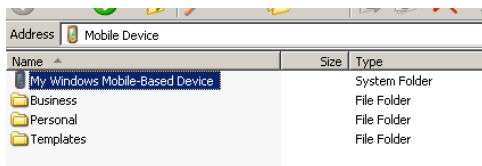
Uncheck everything in this window, and then click "OK" in the upper right of the screen

Put your pocket PC back into the cradle

Open ActiveSync 4.2 and click on "Explore"

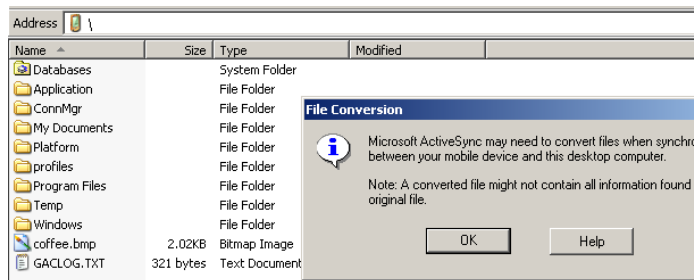


Then double click on "My Windows Mobile-Based Device"

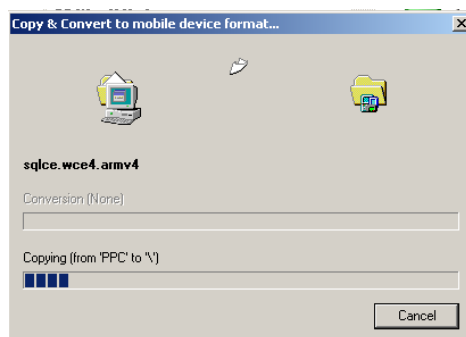


Copy "VRPInst.CAB" and "sqlce.wce4.armv4.CAB" and "ScanWedge.exe" from your local computer to this folder

Click "OK" to any warnings.



You will see the following screen and the files are transferred to your Mobile Device



When the transfer is complete we need to go back to the actual PocketPC Device

Click "Start", then "Programs", then "File Explorer"

Click on the down arrow next to the "Windows" button and select My Device

You can now see the 3 files you just copied.

Tap on "sqlce.wce4.armv4.CAB" and it will install then disappear. It is important that **this file be installed first.**

After sqlce has installed, tap on "VRPInst.CAB" Click Ok to any warnings or notices.

Next click and hold "ScanWedge" Select Copy from the popup box

In the same area, click on "Windows" then "Startup"

Click and hold the screen somewhere in the white area, from the popup box, select paste. Then click ScanWedge.

A popup box for this program will appear, select "Config" then "Setup"

On the new screen, put a check next to "Send ENTER key after suffix", then click "OK"

Click on ScanWedge again, click on config again, this time click on "Codes"

This is where you define the barcodes used by your company, un-checking unnecessary

codes will increase performance.

If you are not sure, un-check all except Code 39 and UPCA.

Click OK When finished, you may now Exit back to the main screen of the PocketPC.

Click "Start", then "Programs", then "File Explorer"

As before Click the down arrow next to the Folder Name you are in and select "My Device"

Navigate to "Program Files", then click the "VRPPocketPC" folder, then click and hold the next 'VRPPocketPC" icon

Select "Copy" from the popup menu

Navigate to "Windows" then "StartupMenu"

Click and hold the screen somewhere in the white area, from the popup box, select paste.

You can exit to the main screen of the PocketPC. Installation is complete.