

## Step 1

### Download and Unzip the necessary files to your local hard drive.

You can download the files from:

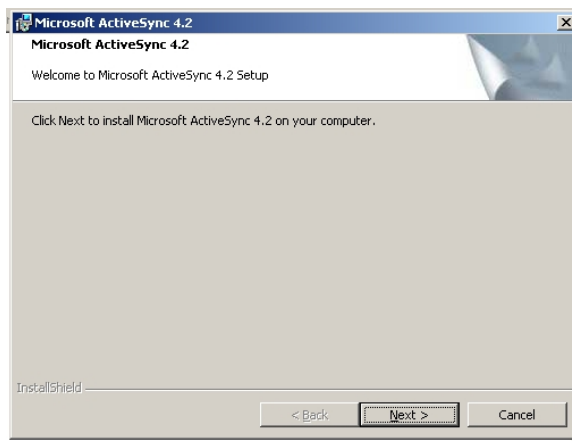
<http://www.posplus.com/downloads/PocketPC/PPCinstallationfiles.zip>

## Step 2

Install Activesync 4.2 on your computer.

Connect your Pocket PC Cradle to the computer, and put your unit in it

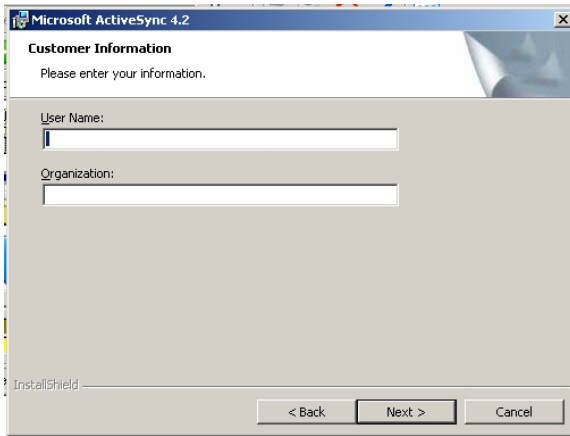
Run the installer (usually called ActiveSync42.exe) , and click "Next" on the following screen.



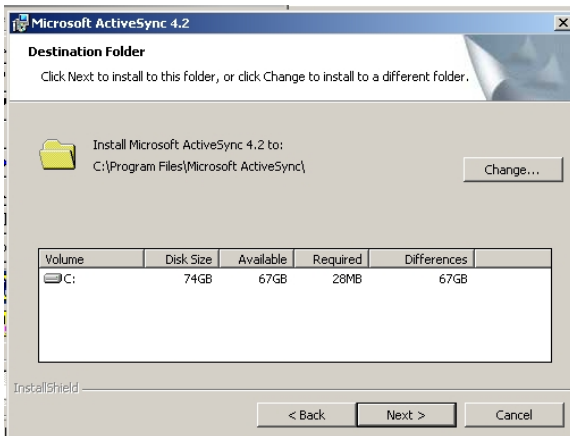
Then accept the terms, and click "Next"



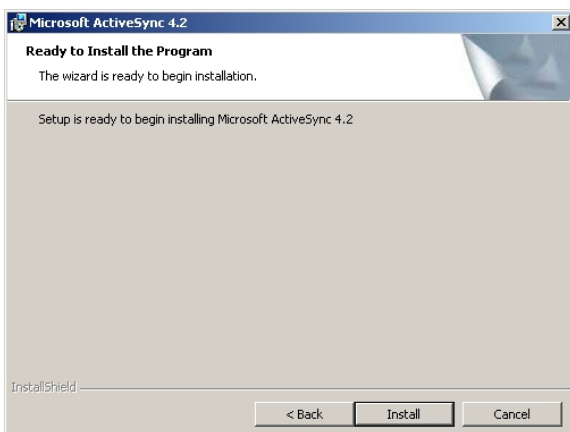
You can leave the following fields blank, or input your information, if you'd like, then click "Next"



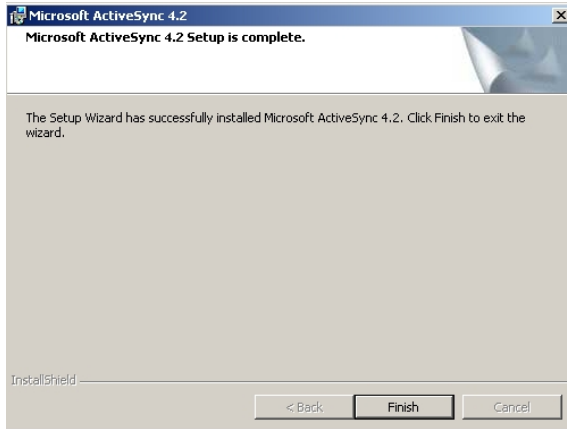
The default installation is usually best and recommended, unless you have space issues in your C drive, click "Next"



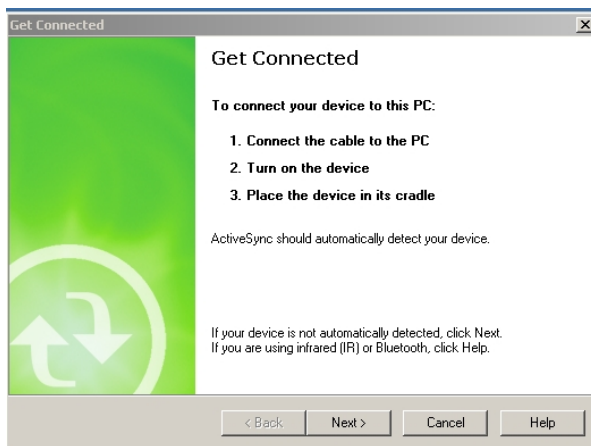
On the following screen, just click Install



The installation routine is finished, on this screen, just click Finish



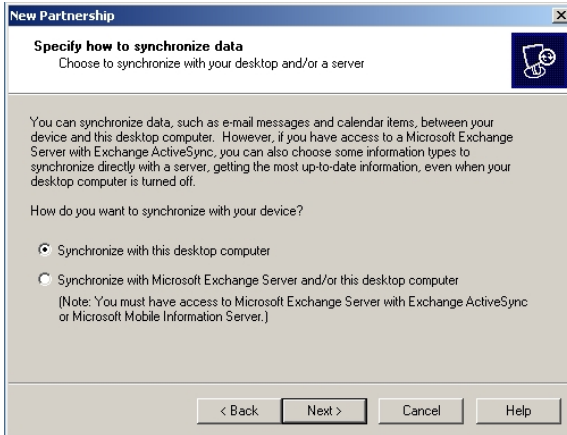
The configuration screen will pop up, just click "Next"



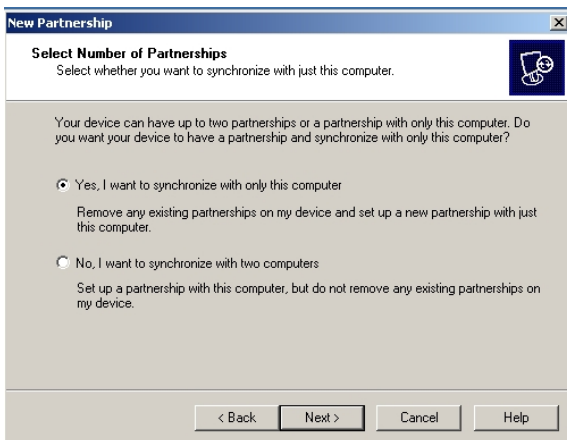
On this New Partnership screen, make sure Standard "partnership" is selected, then click "Next"



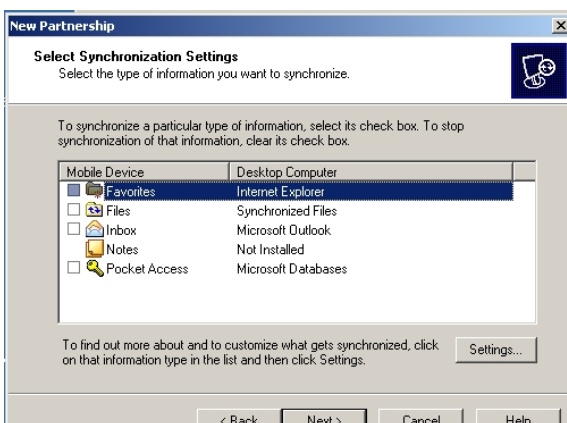
In the following screen, make sure "Synchronize with this desktop computer" is selected, then click "Next"



In the following screen, make sure "Yes, I want to synchronize only with this computer" is selected, then click "Next"



In the following screen, uncheck every option, then click "Next"



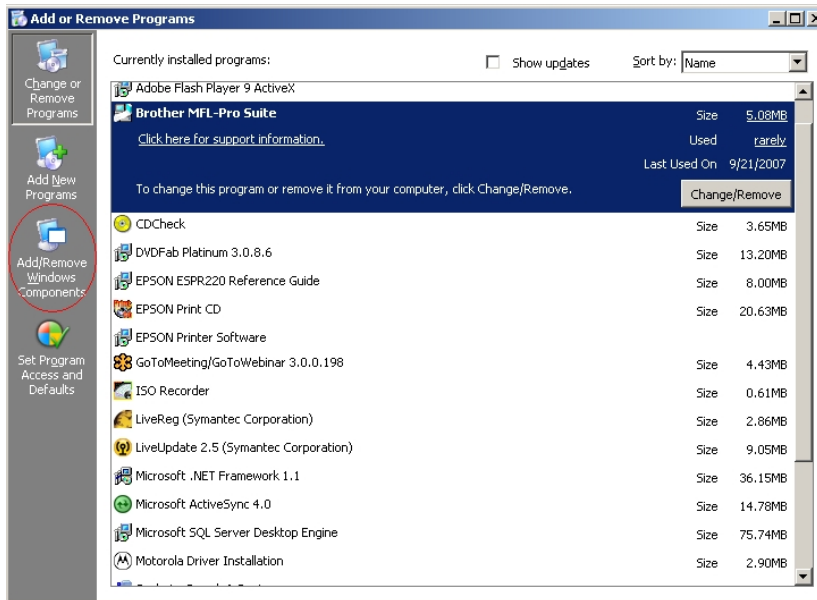
Setup of Activesync 4.2 is complete, on the following screen, click "Finish"

Step 3

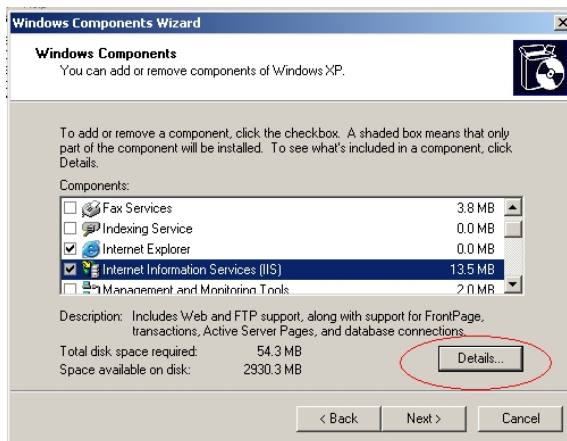
## Install Internet Information Services (IIS)

Click on "Start", select "Settings", click on "Control Panel", then click "Add or Remove Programs".

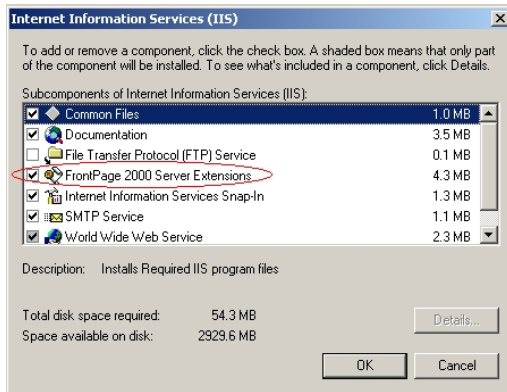
In the Add or Remove Programs dialog box, click "Add/Remove Windows Components".



In the Windows Components Wizard, select the Internet Information Services (IIS) checkbox, and then click "Details".



Select the checkbox next to "Frontpage 2000 Server Extensions" Click "OK"



Back at the Windows components Wizard, click "Next"

If the Files Needed dialog box is displayed, insert your operating system installation disc, browse to the i386 folder, and then click OK.

When installation completes, click Finish.

Close the Add or Remove Programs dialog box, and then close Control Panel.

#### Step 4

Install .Net and bind it to IIS

Install Microsoft .NET Framework Redistributable Package onto your local computer.

It can be downloaded from <http://www.posplus.com/downloads/PocketPC/dotnetfx.exe>

Run the setup file to install .NET

.NET may not as expected bind with IIS after the installation, to bind it you will have to go to the command line.

Click on "Start", select "Run" and type "CMD" in the open dialog box, without the quotes. Click "OK"

```
Type: cd C:\WINDOWS\Microsoft.NET\Framework\v1.1.4322\
```

If v1.1.4322 is not available, choose the folder resembling the highest version number.

Press the "Enter" key on your keyboard.

```
Then type: aspnet_regiis -I
```

Press the "Enter" key on your keyboard.

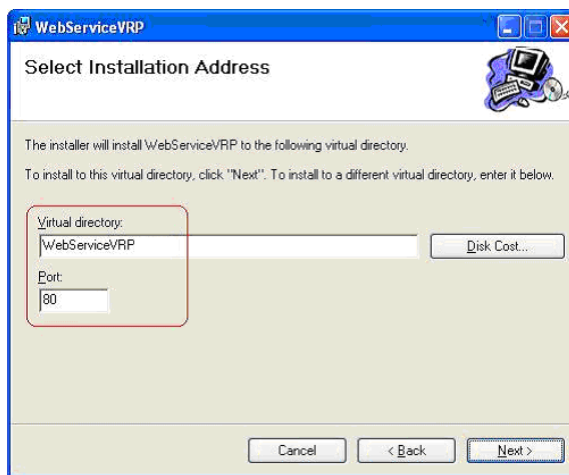
```
ca C:\WINDOWS\system32\cmd.exe
Microsoft Windows XP [Version 5.1.2600]
(C) Copyright 1985-2001 Microsoft Corp.
C:\Documents and Settings>cd C:\WINDOWS\Microsoft.NET\Framework\v1.1.4322\
C:\WINDOWS\Microsoft.NET\Framework\v1.1.4322>aspnet_regiis -I_
```

After it tells you it has installed, you can close the black DOS window.

### Step 5 Install VRP Web Services

Install VRP Web Services by clicking on the WebServiceVRPSetup.msi and follow the instructions.

Remember the Virtual Directory name and the port number at following screen.



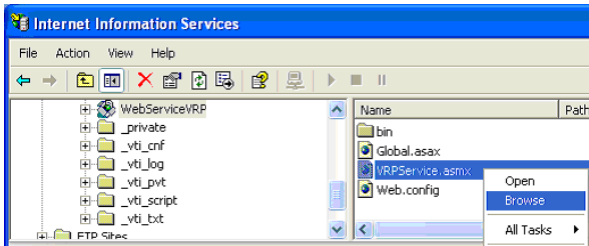
To check that Service are properly installed, click on "Start", then "Settings" then "Control Panel"

Once in the Control Panel, double click on "Administrative Tools" and then open "Internet Information Services"

This will open the IIS administrative interface.

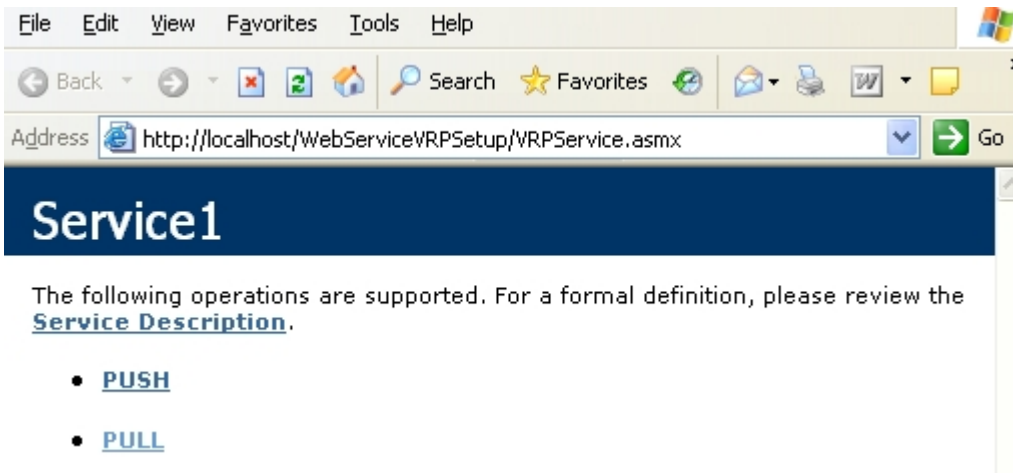
Locate the WebServiceVRPSetup and right mouse click on the VRPService.asmx under the Default Website heading.

On popup menu click on Browse..



Or you can type: <http://localhost:80/WebServiceVRP/VRPService.asmx> into the address bar of your Internet Explorer.

After a brief pause, you should see the following screen:



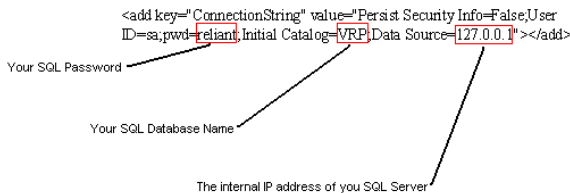
If you see this screen, the previous steps were successful, otherwise consult VRP technical support.

Next we have to Navigate to the following folder:

c:\inetpub\wwwroot\WebServiceVRP\

Right click on "Web.config" and select open. When the dialog asks what program to open it with, select "Notepad"

In this text file, you have to locate the following line, and change it to match your Database criteria.



The Server-Side installation is complete.

## Step 6 Configuration of the Pocket PC

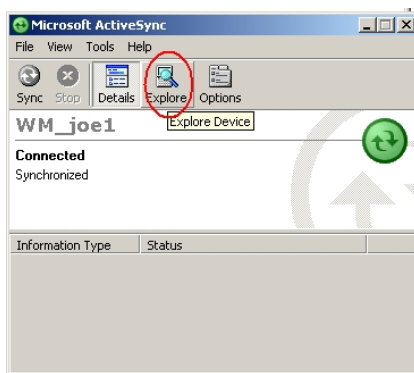
Turn on your Pocket PC and follow the onscreen prompts to calibrate your touchscreen,  
Once setup is complete we will prepare the unit for installation.

Click on "Start", then "Settings" then "Menus"

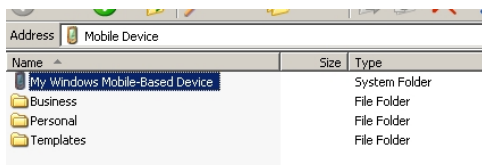
Uncheck everything in this window, and then click "OK" in the upper right of the screen

Put your pocket PC back into the cradle

Open ActiveSync 4.2 and click on "Explore"

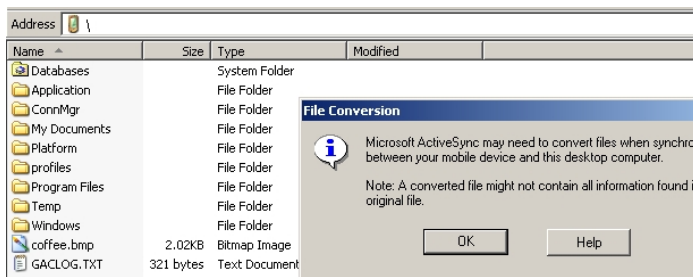


Then double click on "My Windows Mobile-Based Device"

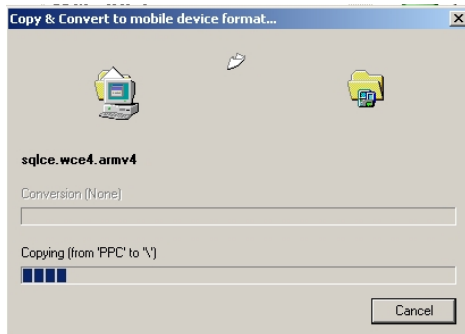


Copy "VRPInst.CAB" and "sqlce.wce4.armv4.CAB" and "ScanWedge.exe" from your local computer to this folder

Click "OK" to any warnings.



You will see the following screen and the files are transferred to your Mobile Device



When the transfer is complete we need to go back to the actual PocketPC Device

Click "Start", then "Programs", then "File Explorer"

Click on the down arrow next to the "Windows" button and select My Device

You can now see the 3 files you just copied, Click on "sqlce.wce4.armv4.CAB" and it will install then disappear

Then you can click on "VRPInst.CAB" it will install and give you a warning about the prior file, you can click "OK" in the upper right corner of that screen as we have satisfied that requirement

Next click and hold "ScanWedge" Select Copy from the popup box

In the same area, click on "Windows" then "Startup"

Click and hold the screen somewhere in the white area, from the popup box, select paste. Then click ScanWedge.

A popup box for this program will appear, select "Config" then "Setup"

On the new screen, put a check next to "Send ENTER key after suffix", then click "OK"

Click on ScanWedge again, click on config again, this time click on "Codes"

This is where you define the barcodes used by your company, un-checking unnecessary codes will increase performance.

If you are not sure, un-check all except Code 39 and UPCA.

Click OK When finished, you may now Exit back to the main screen of the PocketPC.

Click "Start", then "Programs", then "File Explorer"

As before Click the down arrow next to the Folder Name you are in and select "My Device"

Navigate to "Program Files", then click the "VRPPocketPC" folder, then click and hold

the next 'VRPPocketPC" icon

Select "Copy" from the popup menu

Navigate to "Windows" then "StartupMenu"

Click and hold the screen somewhere in the white area, from the popup box, select paste.

You can exit to the main screen of the PocketPC. Installation is complete.