

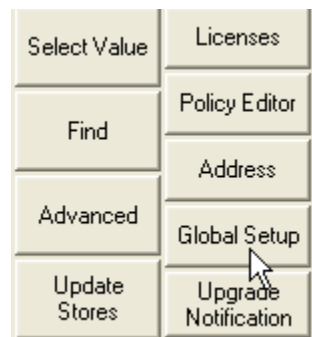
VRP Automatic Update

Setup for Automatic Updates:

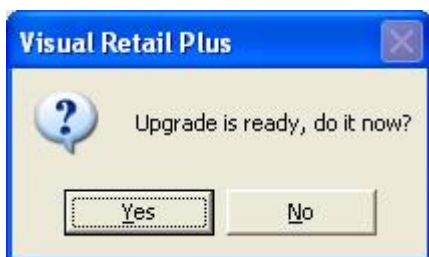
- 1.) Define the source folder for the update file. This folder should be local to a store's network, to minimize the time it takes to process the upgrade. Setting this folder is accomplished from the **global setup** button within the VRP setup screen.

In the global setup panel, the value for LiveUpdateFolder contains the path to the rpxe6.exe file. To use a network directory replace "c:\pos" with the appropriate network share address / path. (i.e. "\\server\pos")

	LiveUpdate	n
▶	LiveUpdateFolder	c:\pos
	UpgradelsDue	N



- 2.) **Cashier Prompt:** The automatic update can be set to either ask for the cashier / operator to accept the update or to force the update. When VRP starts it checks to see if an update is due, if so depending on the setting for this value the program either prompts the user to update or wait; or it proceeds without confirmation to update.



The prompt at left asks for confirmation (to allow a sale in progress to complete). If no one is at the computer, the update will wait for user action. To remove the prompt, change the setting:

▶	AskCashierToUpdate	Y	Is cashier asked when upgrade is due (N-Upgrade w/o asking)
---	--------------------	---	---

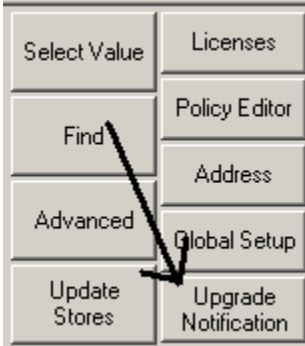


in the VRP setup to the value of N. When set to N, the program will proceed with updating itself when it has been told to do so by the main office – without asking for user confirmation.

- 3.) **RPEXE6.exe** – The update content is still contained within the RPEXE6.exe file, which must be placed at a centrally accessible point in each location. The mechanism of distribution of this file is up to the individual customer's IT personnel. For companies with multiple locations it is recommended that this file be moved to the local store server first, so the client workstations can obtain the update data from their local area network.

In larger companies with T1 or better type connections it may be feasible to set one centrally shared folder (assuming all store workstations can access it) to allow upgrading from one centralized share point.

- 4.) Mechanism of Operation – The automatic update is triggered by an operator at the main office clicking the **Upgrade Notification** button within the VRP setup screen. (Directly below global setup, visible in the screen cap above). This sets the value “Upgradeisdue” in the globalsetup table to Y.



- 5.) The first computer to run VRP that detects the “Upgradeisdue” flag set to Y edits the “licensecontrol” table to set the “Upgradeisdue” field to “Y” on an individual register-by-register basis ; and sets the “globalsetup” of “UpgradeIsDue” value to “N”. One by one as the registers come online they see that their individual station ID is marked for update and they proceed based on the setting for cashier notification.

StoreID	Register	ExpDate	LicenseNo	ExpDateEncrypted	Machine	IPAddress	Lastlogin	Floating	UpgradelsDue
01	01	12/31/2099		429173.8				0	Y
01	02	12/31/2099		437932.4				0	Y
98	01	12/31/2099	18966296	316233.3				0	Y
xx	xx	12/31/2099		429173.7				0	Y

(License control table showing the “UpgradeIsDue” field set to Y for all stations)

- 6.) Once a register have processed the upgrade the “UpgradeIsDue” field in “Licensecontrol” will be set N.
- 7.) **Advanced:** To trip an update for only one station, the “licensecontrol” table can be edited with Rpaccess to set the “UpgradeIsDue” parameter to Y. (Contact VRP Tech support for assistance with this operation if needed.)