

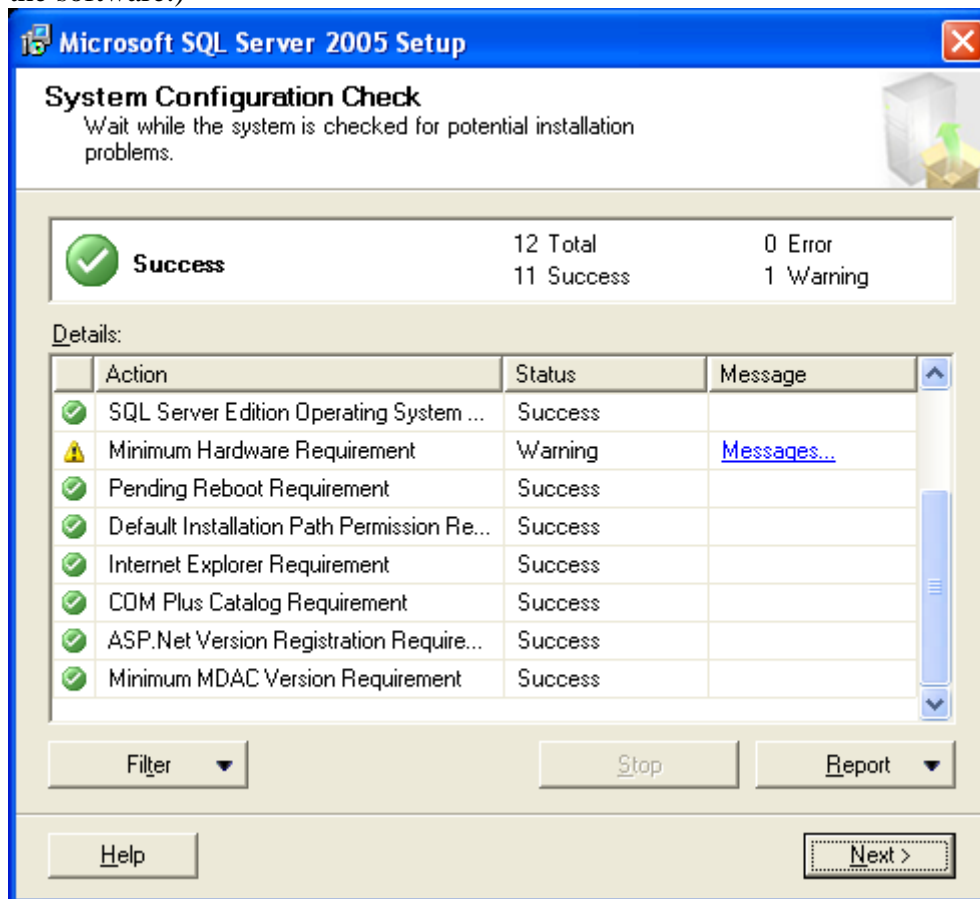
Microsoft SQL Express installation for VRP

Before installing SQLEXPRESS you must install the .net framework 2.0. If the .net 2.0 framework is not installed on the computer, the SQLEXPRESS installation will fail.

To install the SQLEXPRESS, invoke the executable file SQLEXPRESS.EXE – available from Microsoft. When invoking the file, the executable decompresses itself into a temporary folder before opening the installation dialog path.

Installation Procedure

Once the file has completed decompressing, the license compliance statement appears. Indicate your acceptance of their software license agreement and click on the next button. (Not accepting the terms of their license agreement prevents installation of the software.)



The installer checks the system configuration, which may take up to several minutes. When the check is complete, click Next to continue.

Microsoft SQL Server 2005 Express Edition Setup

Registration Information

The following information will personalize your installation.

The Name field must be filled in prior to proceeding. The Company field is optional.

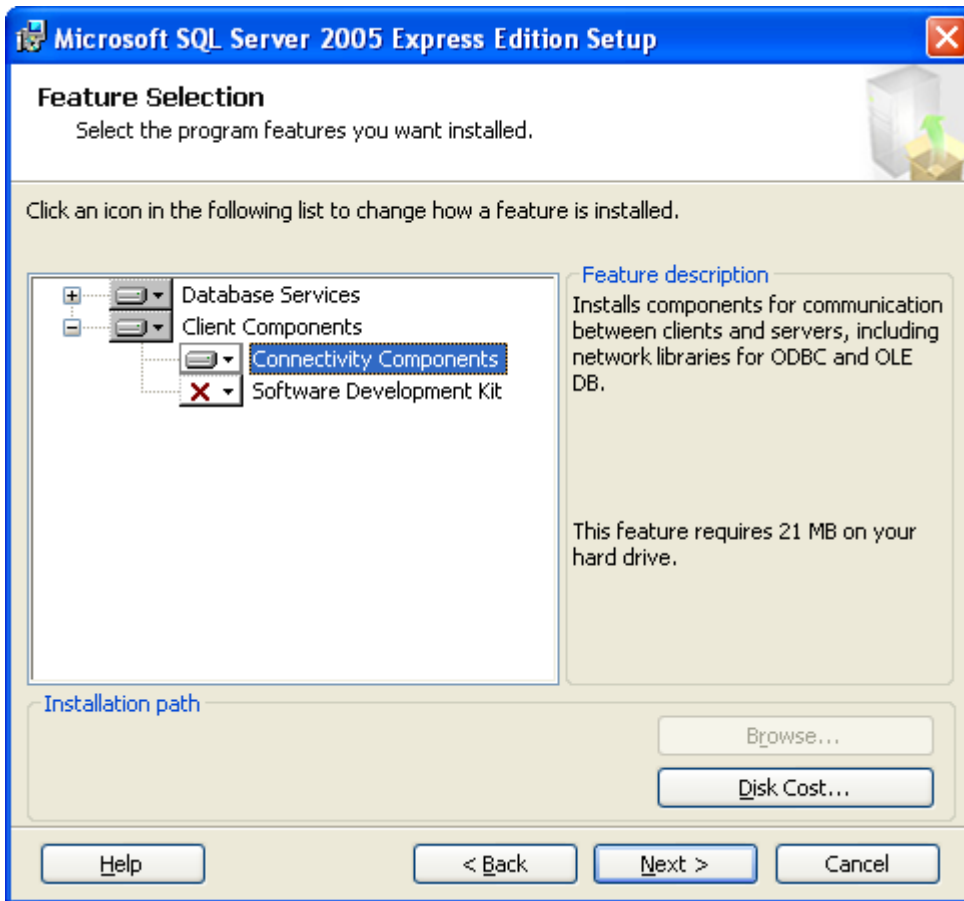
Name:
John Q Public

Company:
Visual Retail Plus

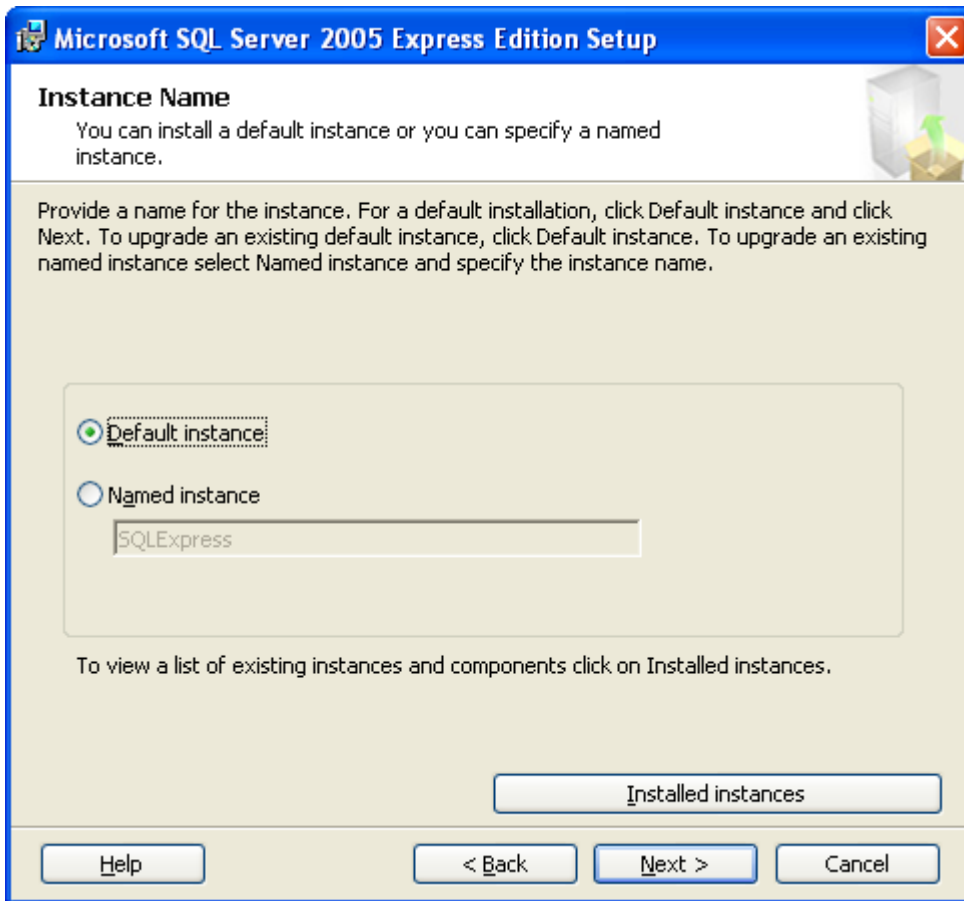
Hide advanced configuration options

Help < Back Next > Cancel

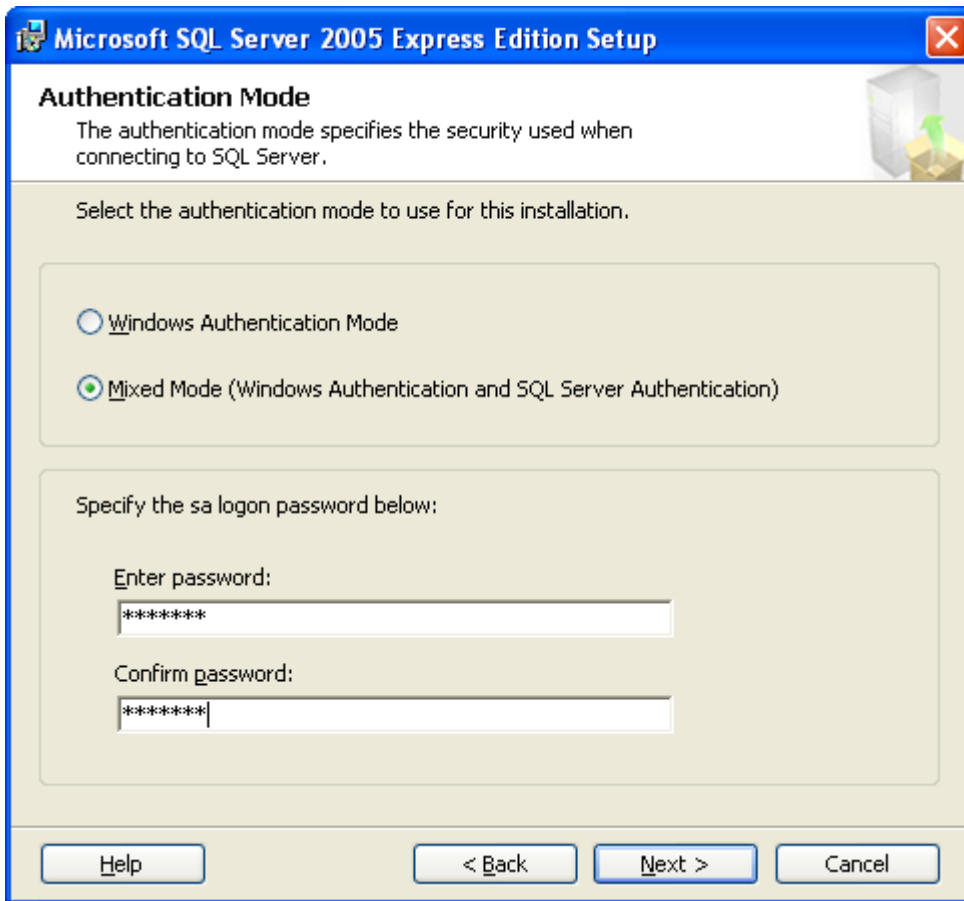
Enter your name or company name in the fields, and click next.



On the feature selection window, enable “Connectivity components”. Click on the box and select the option “feature will be available on the local hard drive”.



Default instance should be selected. Unlike MSDE 4, SQLexpress always names its instances. When configuring the software the servername\SQLEXPRESS format must be used.



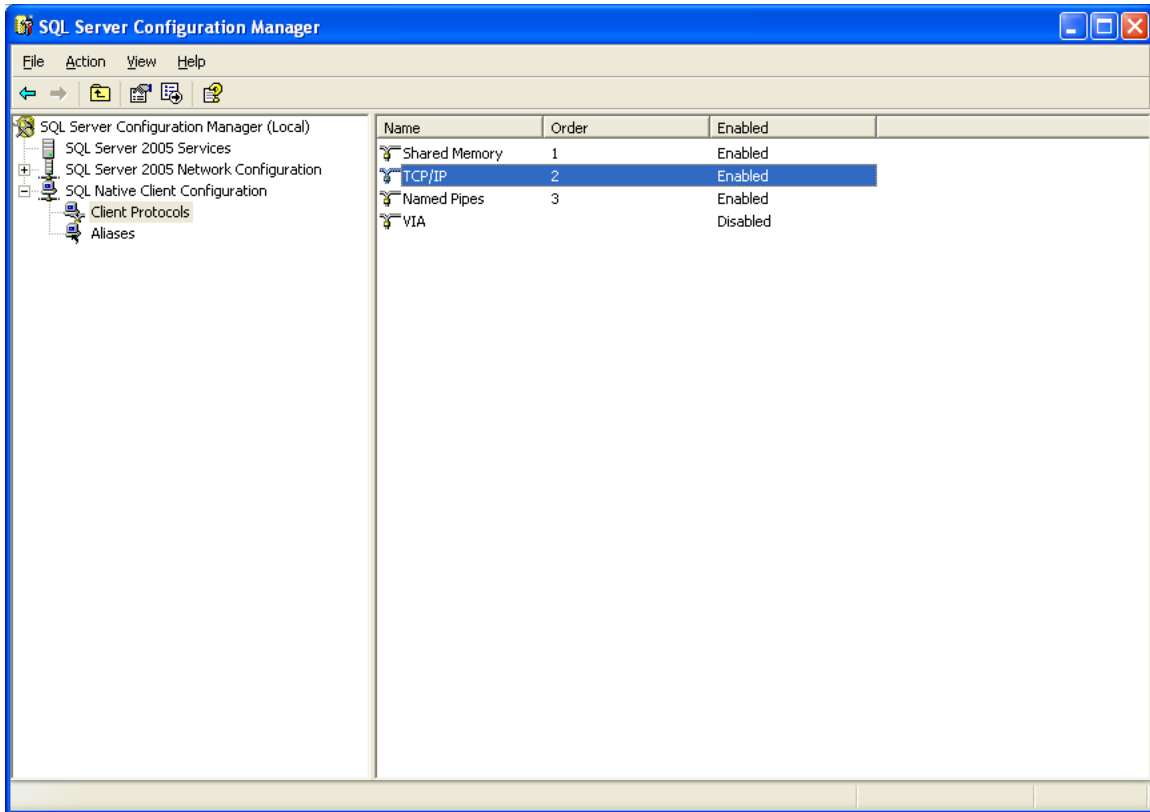
Select **mixed mode** authentication. It is important to enable mixed mode authentication as some aspects of Visual Retail Plus require it. Enter the password for the sa user in the password fields.

Enter your error-reporting preferences on the next screen and click the Next button to finalize the installation.

Post-Installation Configuration

Once the SQLEXPRESS engine is installed on the computer some configuration changes need to be made to it in order to allow VRP to function.

Open the **SQL server configuration manager** tool.



Click on “client protocols” and ensure that TCP/IP is marked as “enabled.” You may wish to also enable Named Pipes based on the nature of your infrastructure, however at a minimum TCP/IP must be enabled.

Close the server configuration manager, and open the **SQL server surface area configuration** tool.

SQL Server 2005 Surface Area Configuration

Microsoft
SQL Server 2005
Help Protect Your SQL Server

Microsoft
Windows Server System

Minimize SQL Server 2005 Surface Area

SQL Server 2005 improves manageability and security by giving administrators more control over the surface area of local and remote instances of SQL Server 2005. With the SQL Server 2005 Surface Area Configuration tools, you can easily:

- Disable unused services and network protocols for remote connections.
- Disable unused features of SQL Server components.

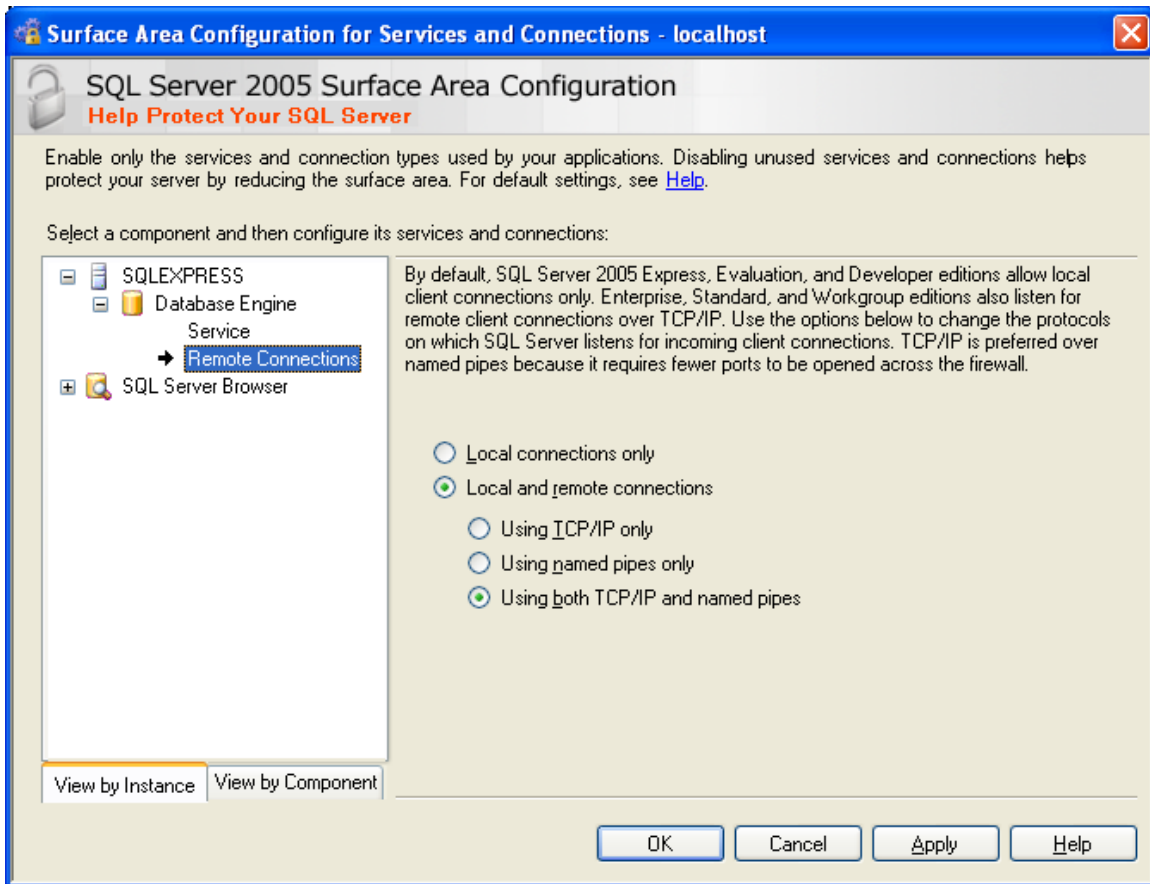
For new installations, use these tools to enable required features, services, and network protocols that are disabled by default. For upgraded instances, use these tools to identify and disable unused features, services, and protocols.

 [Read more about configuring the SQL Server surface area.](#)

Configure Surface Area for localhost [\[change computer\]](#)

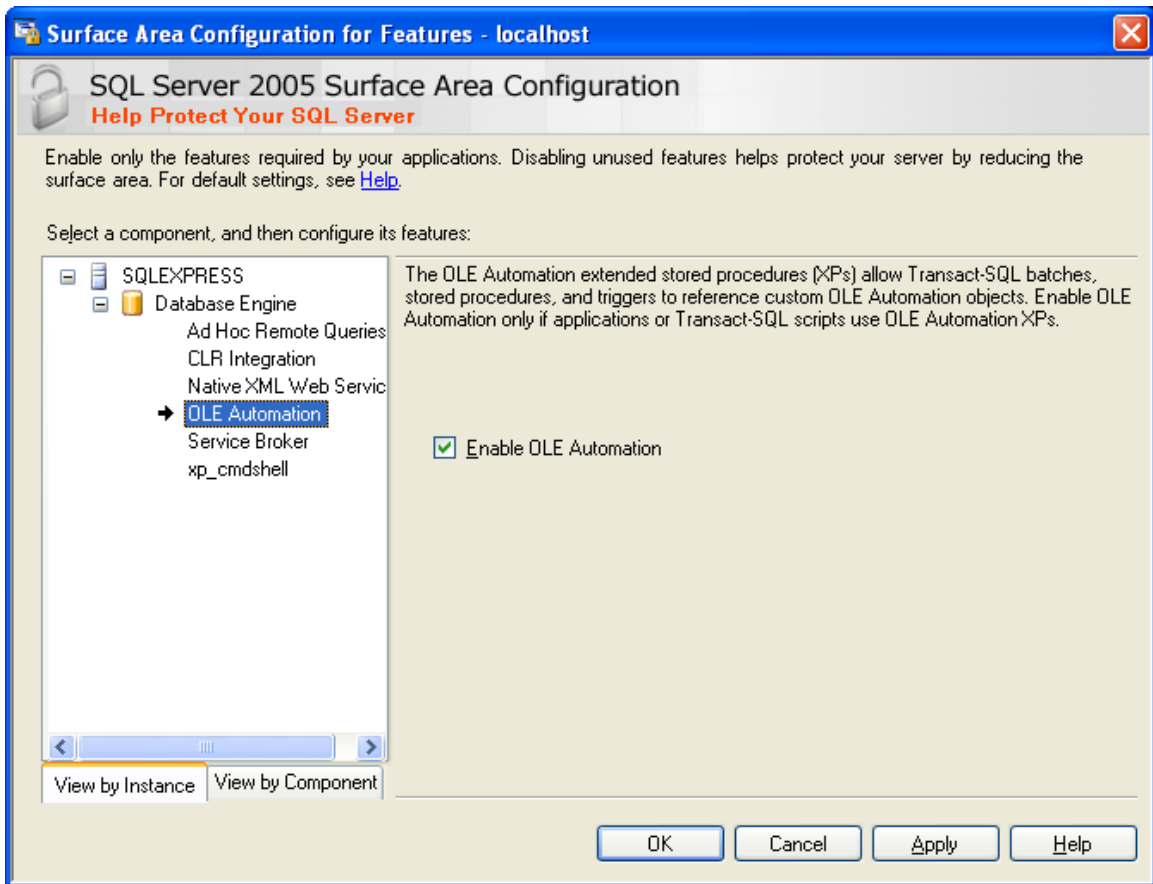
-  **Surface Area Configuration for Services and Connections**
-  **Surface Area Configuration for Features**

Click on the upper option first, (Config for services and connections)

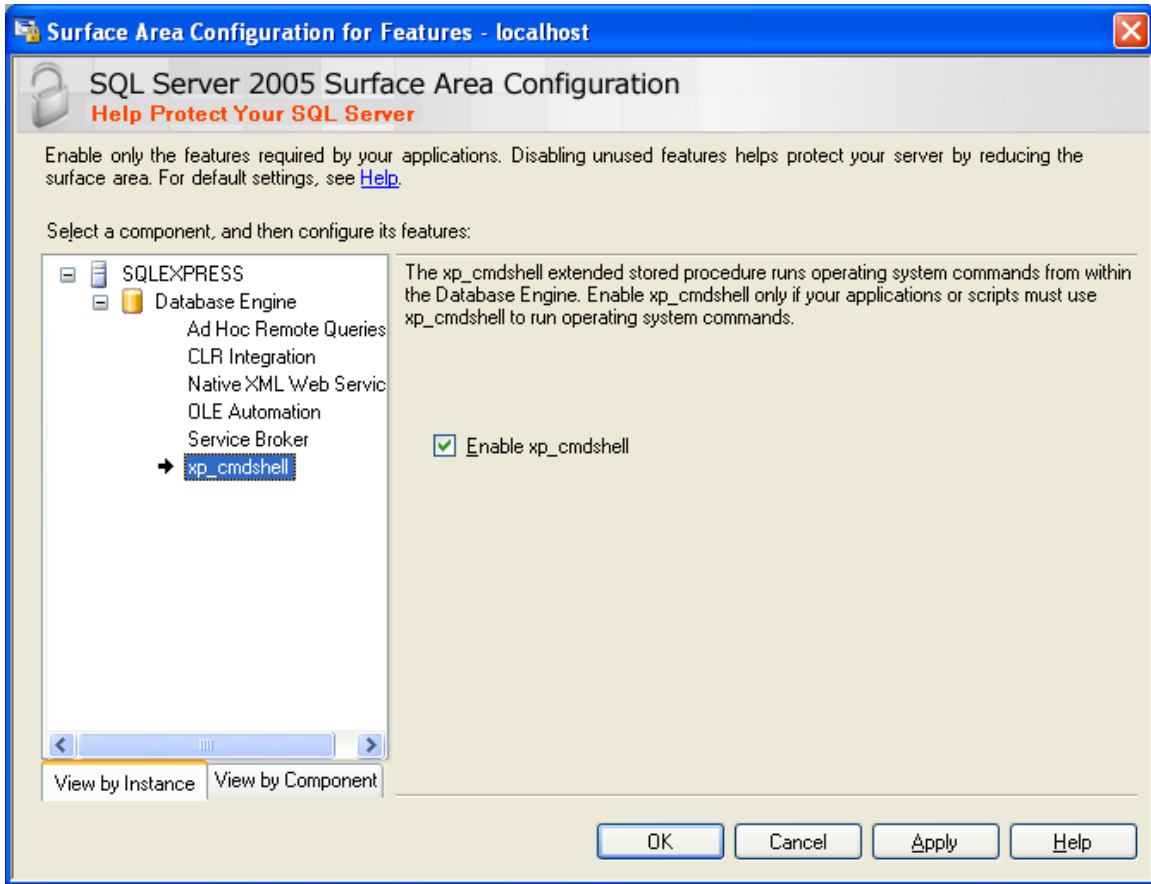


Ensure that “Local and remote” connections are enabled. The lower selection should be set to “Use TCP/IP only” **or** “Use Both TCP/IP and named pipes.”

Exit out of the screen, and click on “Surface area configuration for Features”.



Enable OLE automation.



Enable xp_cmdshell.

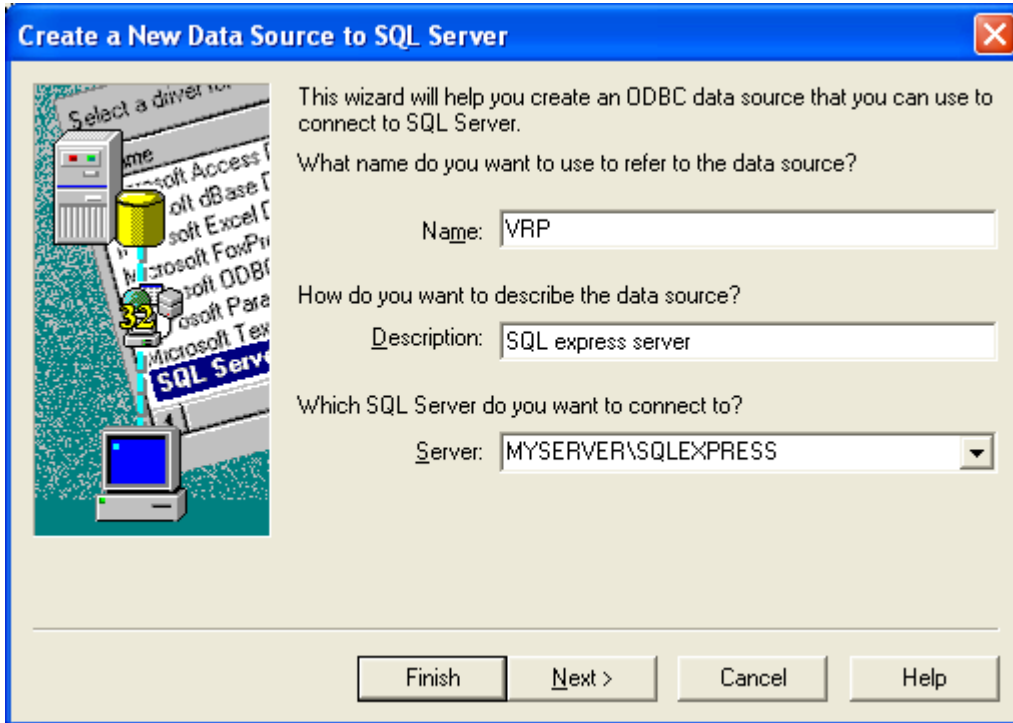
Click OK and exit the configuration manager.

This completes the setup of Microsoft SQL Express for Visual Retail Plus.

Connecting VRP to a SQLexpress server:

Workstation:

In the ODBC settings, the instance name of SQL express **must** be specified in the server name field.



Note that when using the **full version** of SQL 2005 (NOT sqlexpress) this step does not apply.

Communication Setup:

	Mo	Tu	We	Th	Fri	Sat	Fetch	Send	Destination Folder	SharedFolder	Instance Name	Method
	<input checked="" type="checkbox"/>	<input checked="" type="checkbox"/>	<input checked="" type="checkbox"/>	<input checked="" type="checkbox"/>	<input checked="" type="checkbox"/>	<input checked="" type="checkbox"/>	<input checked="" type="checkbox"/>	<input checked="" type="checkbox"/>	192.168.111.213	\\192.168.111.213\pos		VPN
<i>f</i>	<input checked="" type="checkbox"/>	<input checked="" type="checkbox"/>	<input checked="" type="checkbox"/>	<input checked="" type="checkbox"/>	<input checked="" type="checkbox"/>	<input checked="" type="checkbox"/>	<input checked="" type="checkbox"/>	<input checked="" type="checkbox"/>	192.168.111.18\sqlexpress	\\192.168.111.18\pos	SQL2005	VPN
*	<input type="checkbox"/>	<input type="checkbox"/>	<input type="checkbox"/>	<input type="checkbox"/>	<input type="checkbox"/>	<input type="checkbox"/>	<input type="checkbox"/>	<input type="checkbox"/>				

Add Executive Add Time Stamp Fields Close

When configuring rpsync communication to a SQLEXPRESS server, the DSN settings need to reflect that.

The **destination folder** must include \SQLEXPRESS after the IP address.

The **instance name** must be specified as SQL2005 (from the pulldown menu).

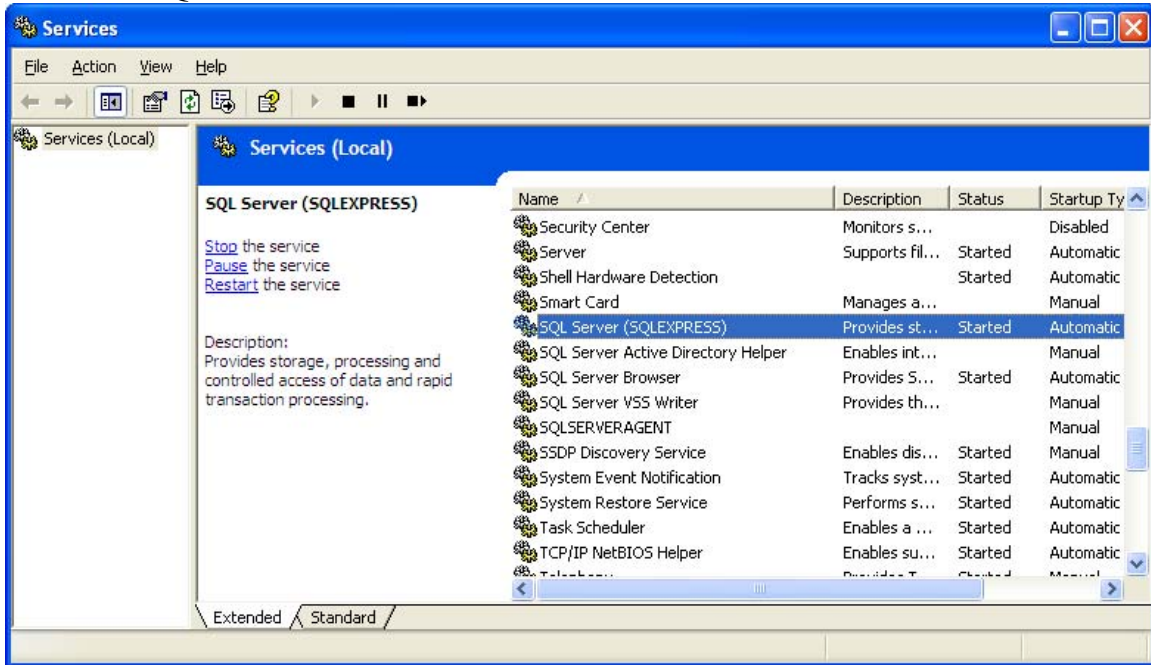
Open the **services** control window. This can be performed in one of two ways:

Click on start, select run, type “Services.msc” in the line and click Ok.

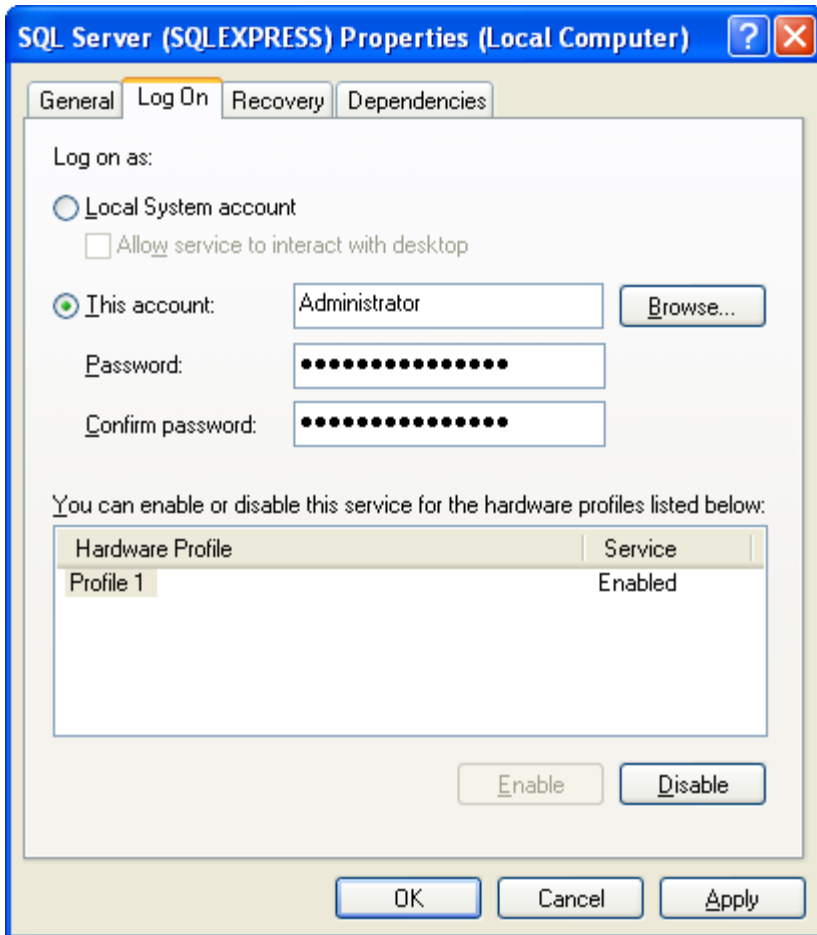
Or

Click on start, settings, control panel, administrative tools, services.

Locate the SQL server service in the list.



Right click on the line for the SQLEXPRESS server and select **properties** from the menu.



Click on the **Log On** tab. Specify the windows user account that the SQL server service uses to interact with windows as an account that has permissions to the local file system. For communications via RpSync, the SQL server needs to be able to create and modify files on the local drive.

Select the **this account** option and enter the username and passwords in the appropriate fields. Click **Ok**. Restart the SQL server service to implement the change and test the security. If the password was entered improperly, the SQL server service will not start.

Ensure the user account specified for the SQL server service has NTFS permissions to create and modify files to the work folder specified in the RPSync configuration **advanced** options pane.